



MT4

Chart Display and Functions

We would like to introduce the display and functions.

Market Watch: 21:54:59

Symbol	Bid	Ask
EURUSDfx	1.11480	1.11503
USDJPYfx	119.012	119.040
AUDCADfx	0.91702	0.91766
AUDCHFfx	0.66967	0.67360
AUDJPYfx	82.223	82.314
AUDNZDfx	1.09863	1.10023
AUDUSDfx	0.69083	0.69124
CADCHFfx	0.00000	0.00000
CADJPYfx	89.649	89.685
CHFJPYfx	122.393	122.528
EURAUDfx	1.61232	1.61418
EURCADfx	1.47929	1.48088

Context Menu:

- New Order F9
- Chart Window
- Tick Chart Space
- Depth Of Market
- Hide
- Hide All
- Show All
- Symbols
- Sets
- Spread
- High/Low
- Time
- Auto Arrange
- Grid

If you cannot find the currency that you want in the quotes window, right click at the window, since it is possible to "display all the currency play", please try again.

In order to display the chart, right click I want to display currency pair. Click the "chart display" from the menu that was opened.

When you click the [maximize] button of opened chart, The Chart will be maximized.

Market Watch: 21:54:59

Symbol	Bid	Ask
EURUSDfx	1.11480	1.11503
USDJPYfx	119.012	119.040
AUDCADfx	0.91702	0.91766
AUDCHFfx	0.66967	0.67360
AUDJPYfx	82.223	82.314
AUDNZDfx	1.09863	1.10023
AUDUSDfx	0.69083	0.69124
CADCHFfx	0.00000	0.00000
CADJPYfx	89.649	89.685
CHFJPYfx	122.393	122.528
EURAUDfx	1.61232	1.61418
EURCADfx	1.47929	1.48088

EURUSDfx,H1

EURUSDfx,H1 1.11440 1.11551 1.11412 1.11487

21 Aug 2015 24 Aug 08:00 25 Aug 16:00 27 Aug 00:00 28 Aug 08:00 31 Aug 16:00 2 Sep 00:00 3 Sep 08:00 4 Sep 16:00

1.16760
1.15760
1.14785
1.13785
1.12785
1.11785
1.11487
1.10785

When you click the button "Undo (reduction)", it will go back to its original size.

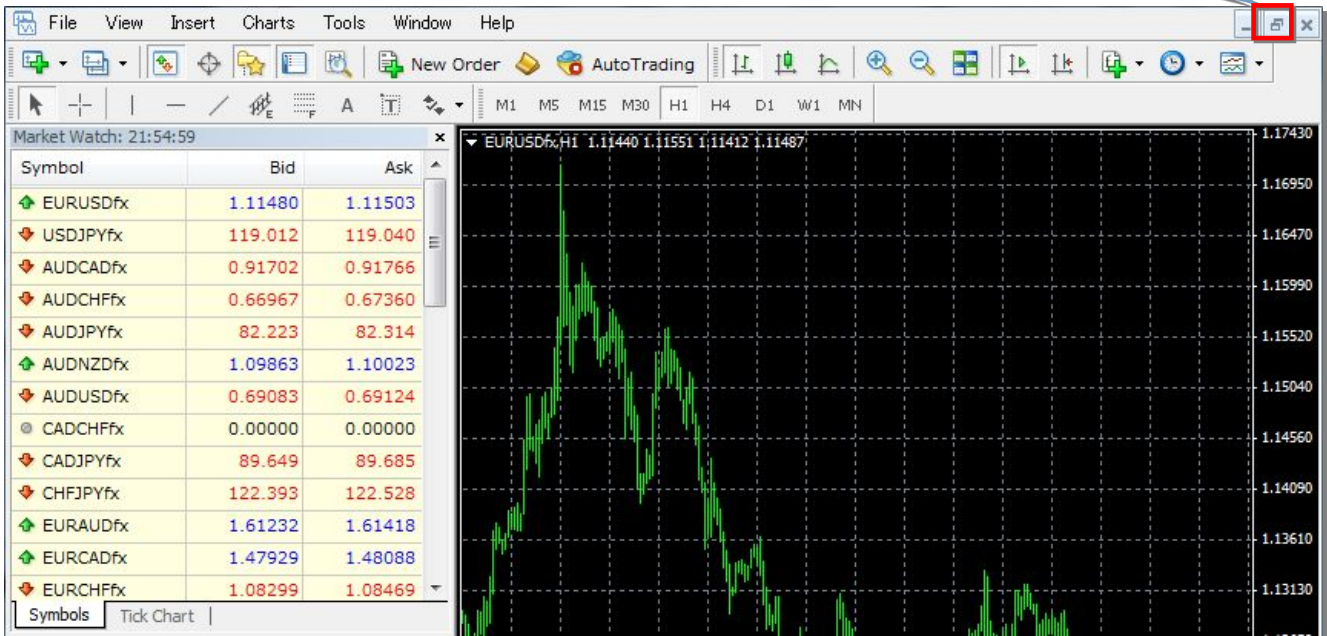
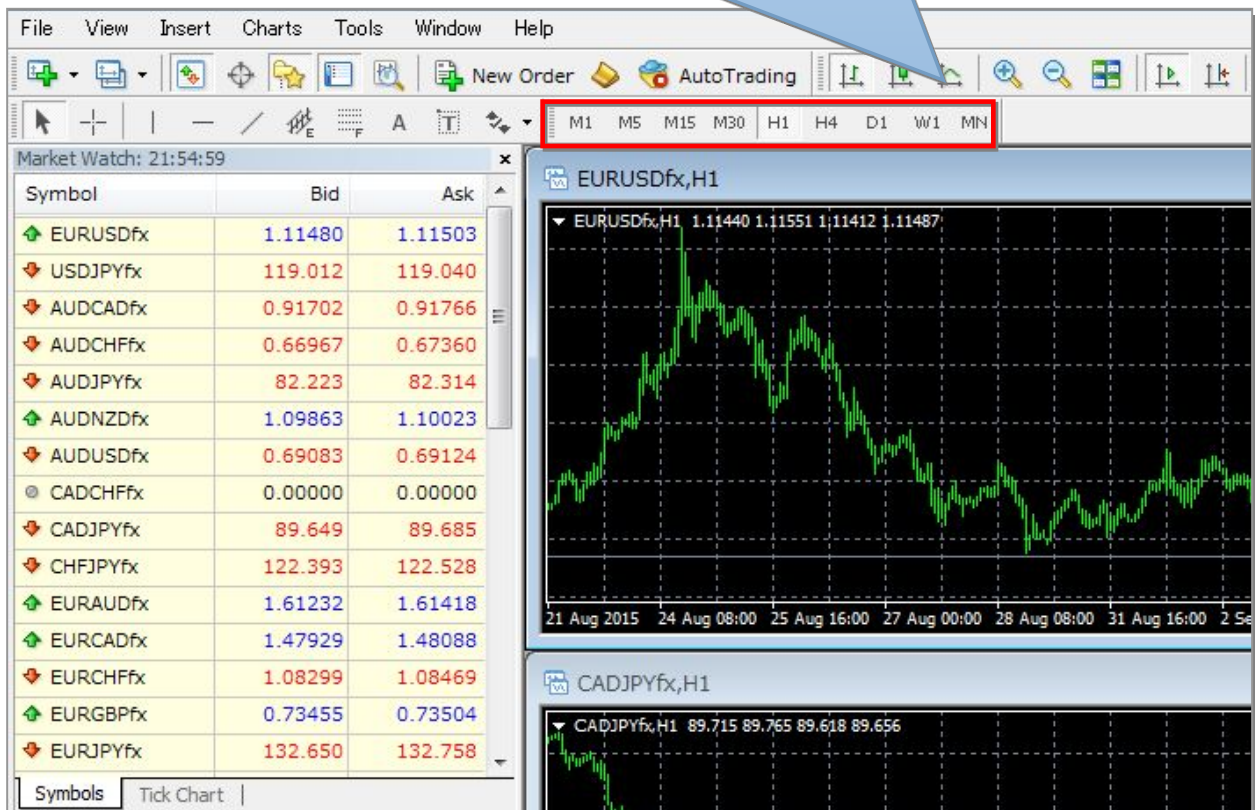
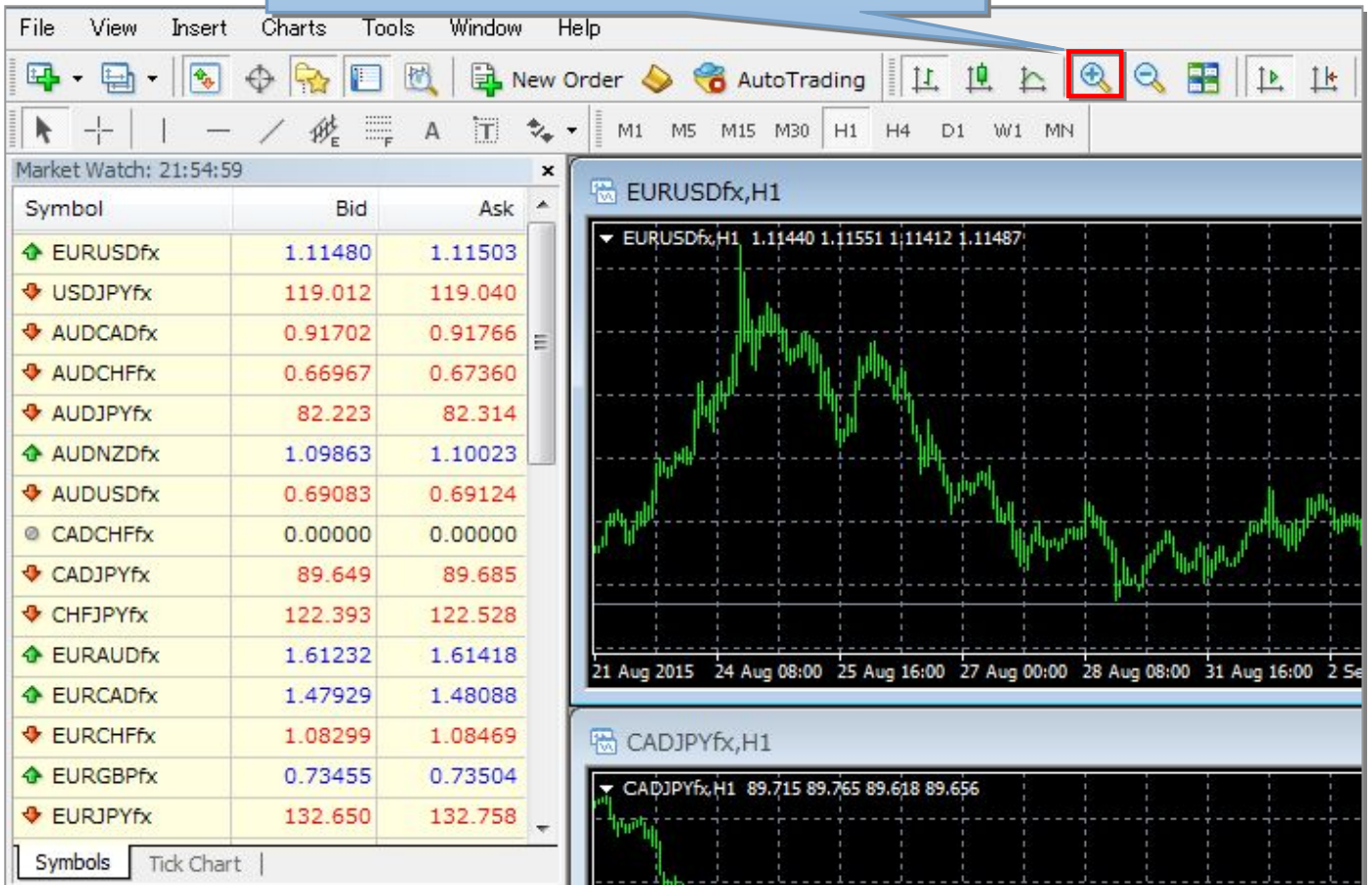


Chart time axis panel

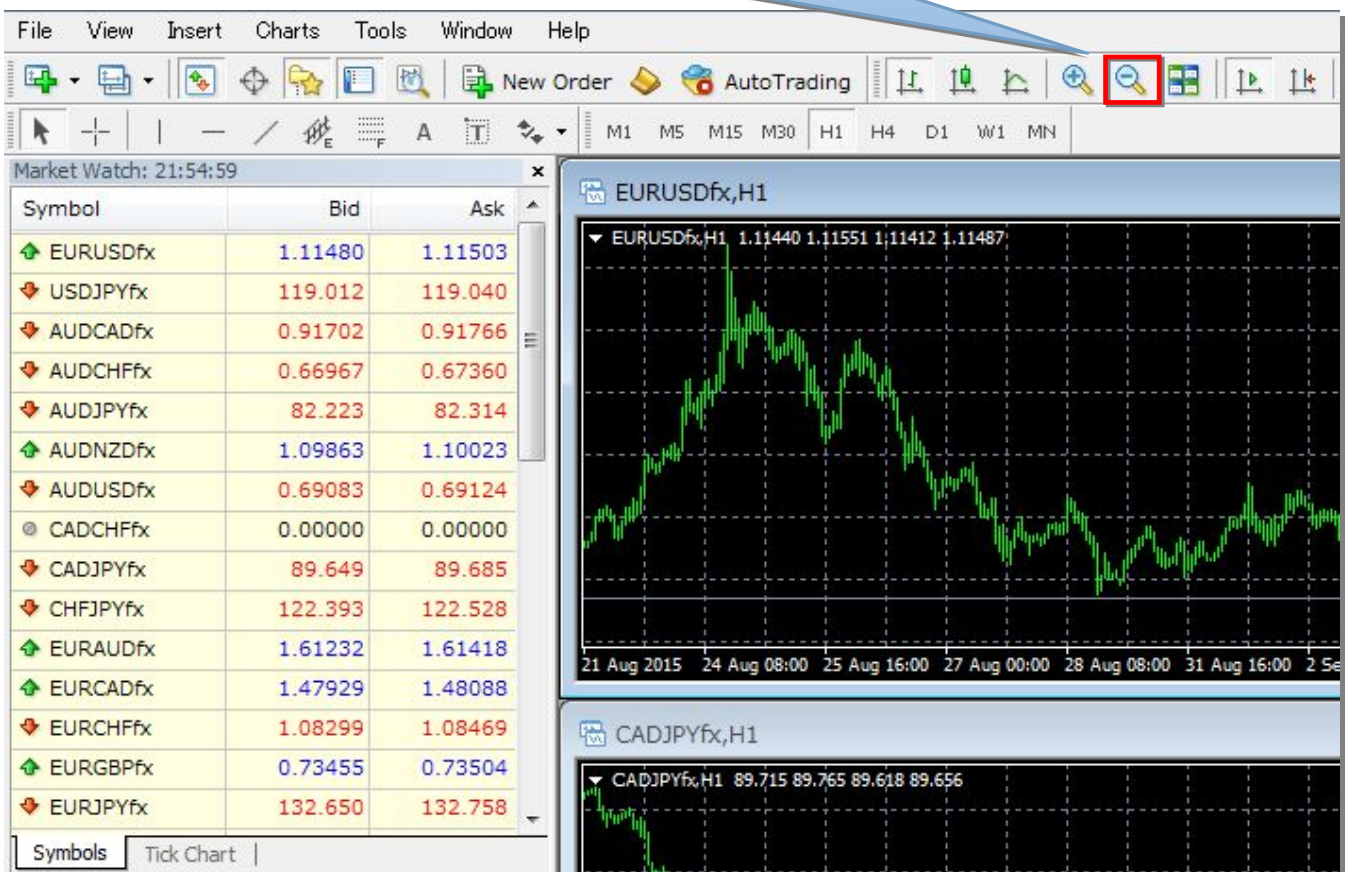
1-minute display and a 5-minute foot display and a 15-minute foot display and a 30-minute foot display from the left.



Enlarge the display of the chart from the "Zoom In" button.

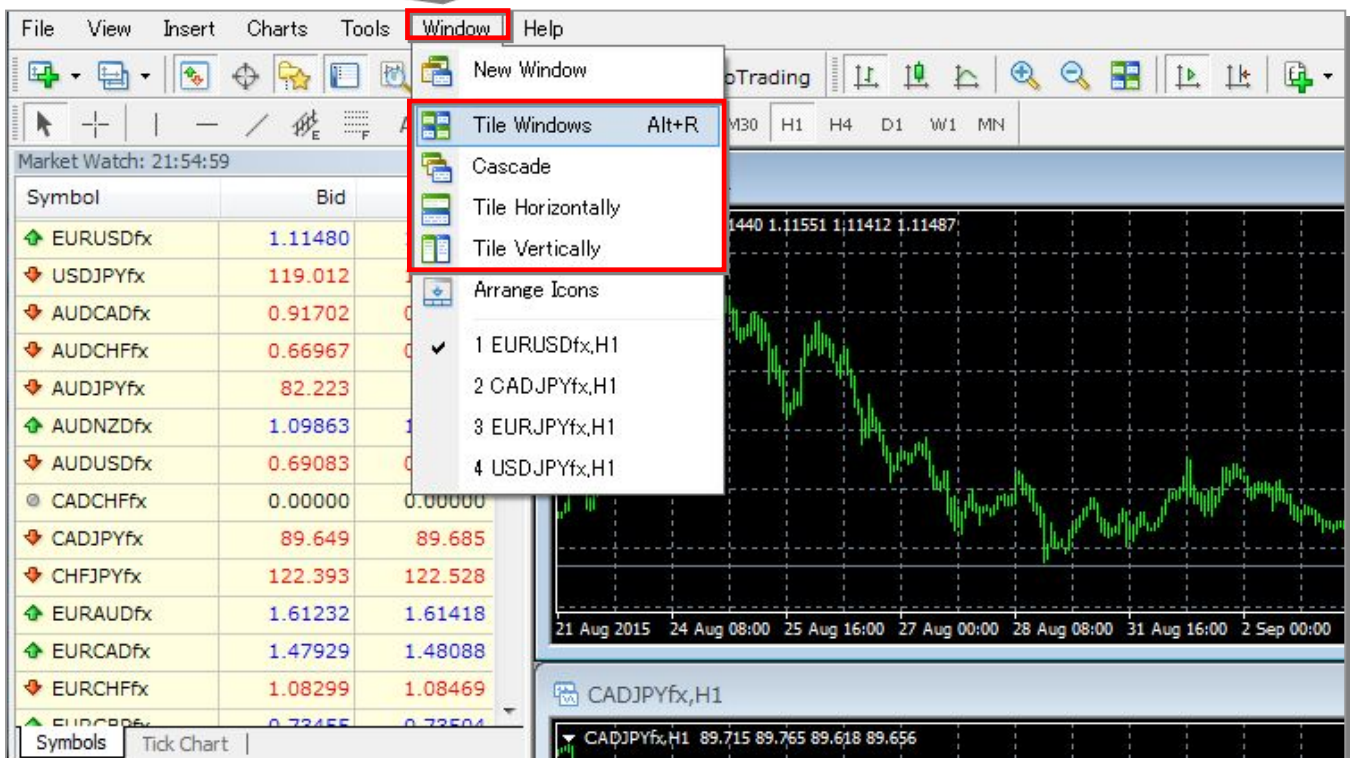


Reduce the display of the chart from the "Zoom Out" button.



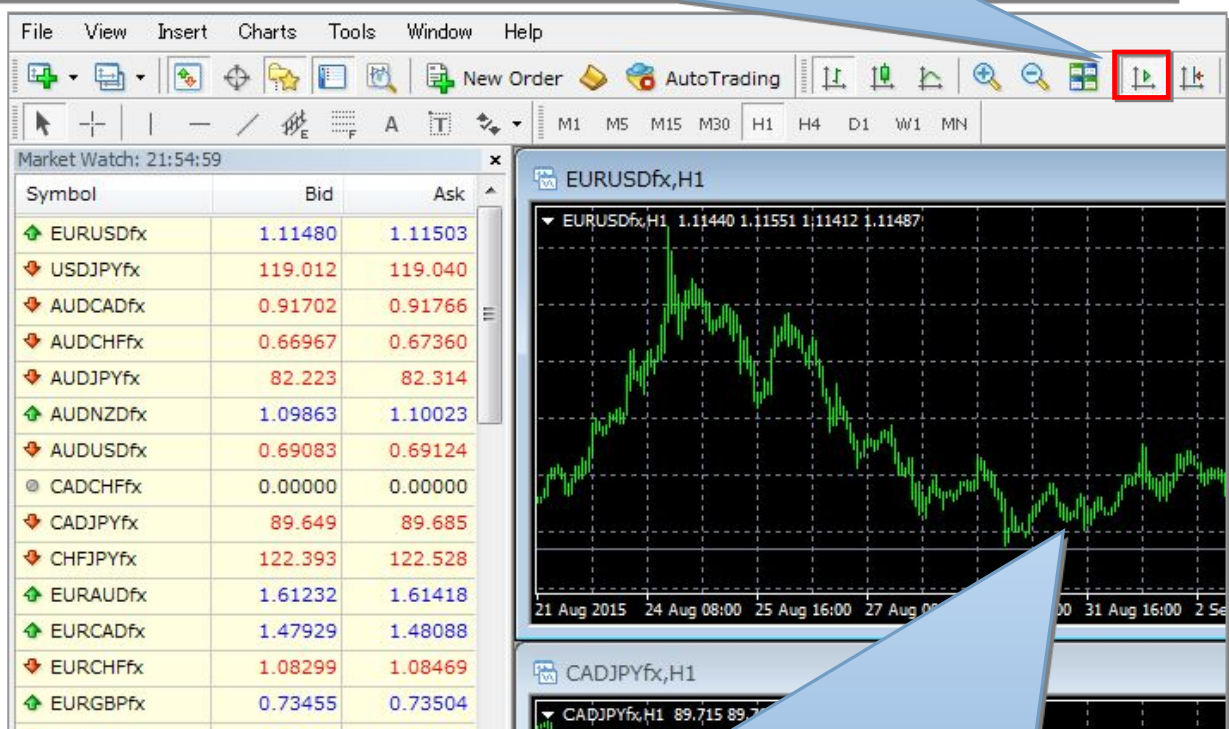
It is possible to display multiple charts.

For multiple display, you can set the Configuration setting that you like in the “alignment of the window” of the “window” tab.



If you turn-on the “auto scroll”, the chart will automatically shift to left.

If you turn-off the “auto scroll”, the chart will automatically shift to right.



You can freely scroll the chart up to the place you want to drag it by the mouse.

Above is the chart display and basic usage.

Since there are still various functions,

Please try it yourself once.