

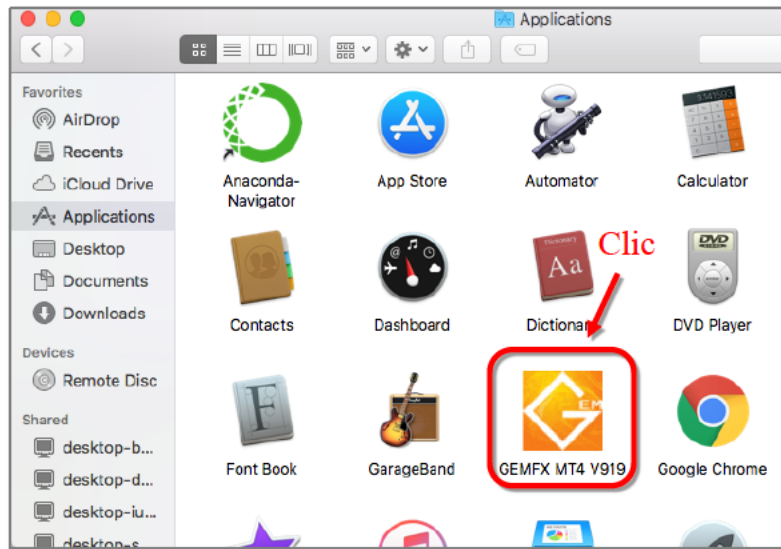


# **MT4 Login Manual**

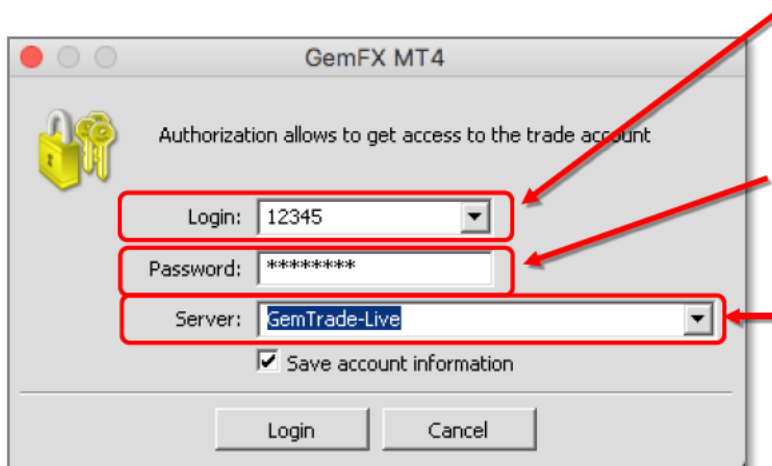
## **for Mac Version**

# 【MT4 Login Method for Mac version】

- Start MT4 from Launchpad or Finder application folder.



- ② If this is your first time to login, the login screen will be displayed



Enter the Login ID (MT4 account number) from the email [Guidance of account opening completion]

Enter the Password that is also included in the email above.

For a real account, The server name is GemTrade-Live or GemTrade-Live2

For a demo account, It is GemTrade-Demo.

If you put a check at [Save account information], the input information will be skipped for the next time.

## 【About the type of Password】

- Password: (In My page, the initial PWD)

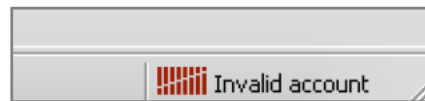
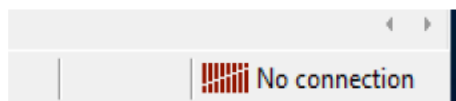
It is required when you log in to MT4

If you log in with this password, all the functions such as ordering will be ready for use

- Password (Read Only): (In My Page, the initial PWD(r))

If you log in with this password, you will not be able to place orders and you will only be logged in to the viewable condition. Although it may not be used normally, please use it if you want to disclose your account to a third party.

Please make sure there is no mistake in the input information and click the [Login] button.

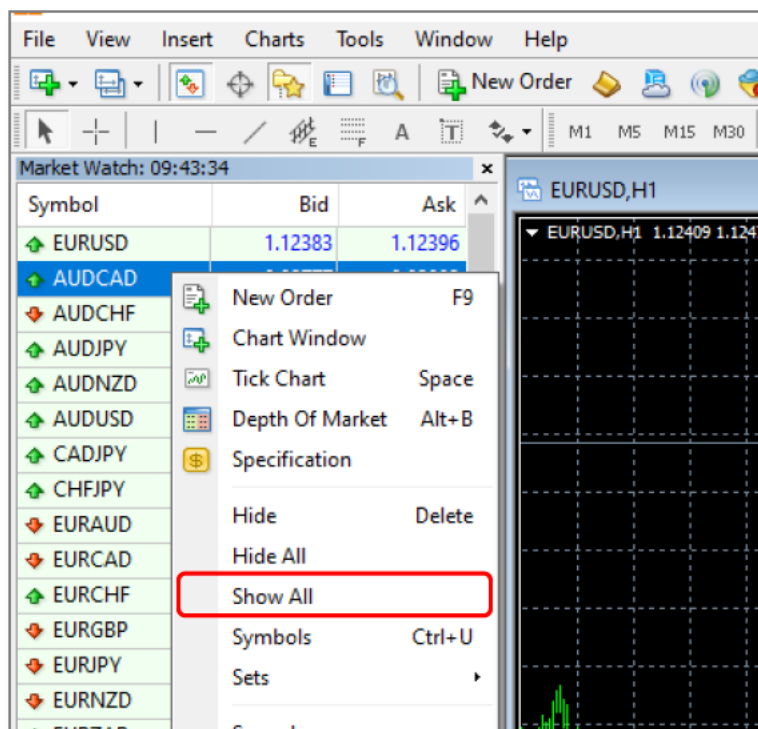


If the display at the bottom right of MT4 changes from the above to the one below, the login is completed successfully.



### ● Tips after logging in to MT4.

If the desired currency pair is not displayed, if it is a currency pair that we handle, Please right-click on the quote display window and choose [Show All], just like the image below. It is possible to display all the currency pairs.



If you have any questions, please contact our customer support at any time:  
[en@gforex.asia](mailto:en@gforex.asia)